

The Bishop of Lubbock



Most Rev. Robert M. Coerver *The Third Bishop of Lubbock*

For his Personal Arms, seen in the dexter impalement right side of the design, Bishop Coerver adopted symbolic elements inspired in large part by his friend and architect, R. Andrew Bennett, all elements reflecting his life and heritage as well as his call to the fullness of the Holy Priesthood as Bishop of Lubbock.

The Arms are composed of several significant elements. Prime among them, a blue wavy bar cutting across the right half of the blazon diagonally from left to right. Representing clearly a river, this evokes the Arms of the Diocese of Dallas where the Bishop spent most of his life and ministry. The river, which is white in the Arms of Dallas, symbolizes the Trinity River which flows through the heart of the city. Here the river is blue, calling to mind not only Our Lady but also his first Pastorate at Our Lady of the Lake Parish in Rockwell, Texas. Within the river rest three roses signifying not only the Most Blessed Trinity but also Saint Rita, patroness of the parish His Excellency served as Pastor until called to his new ministry in Lubbock.

On the top right hand corner of the blazon, a red Chi-Rho. Greek letters which have since antiquity represented Christ, it's a symbol used by the Bishop a significant charge for his priestly ordination.

To the lower left on a green field, a gold carpenter's square signifying woodworking, which represents his Irish heritage, namely his mother's side of the family.

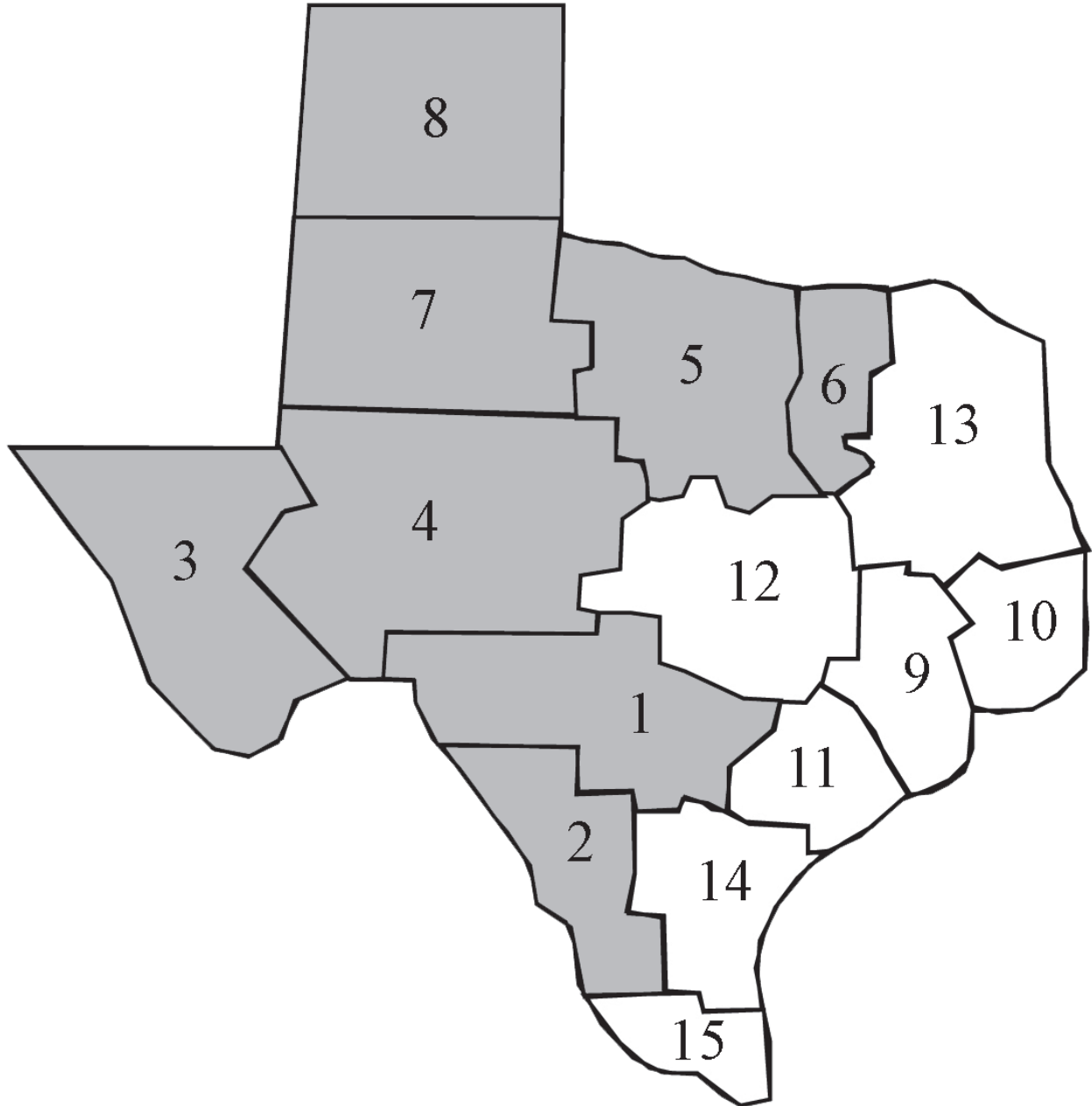
For his Motto, Bishop Coerver adopted the Latin phrase *Suscipe Domine*. Taken from the last meditation of the Spiritual Exercises of Saint Ignatius of Loyola and forming part of what is known as his Prayer of Self-Offering, it translates, "Take Lord, receive."

Completed with external ornaments of a gold processional Cross, standing behind the blazon, it bears the Trinitarian symbol of interlaced red knots, here symbolizing also Holy Trinity Seminary in Dallas, one of the Bishop's alma matres, on whose faculty he served for eleven years; and a pontifical hat, a galero, with its six tassels, in three rows, on either side of the shield, all in green

Date of Birth
Ordained Priest of Dallas
Appointed Bishop of Lubbock
Ordained as Bishop of Lubbock

June 6, 1954
June 27, 1980
September 27, 2016
November 21, 2016

Texas Dioceses



Ecclesiastical province of San Antonio

1. San Antonio (*metropolitan*)
2. Laredo
3. El Paso
4. San Angelo
5. Fort Worth
6. Dallas
7. Lubbock
8. Amarillo

Ecclesiastical province of Galveston - Houston

9. Galveston- Houston (*metropolitan*)
10. Beaumont
11. Victoria
12. Austin
13. Tyler
14. Corpus Christi
15. Brownsville

The Dioceses of and Bishops of Texas

ARCHDIOCESE OF SAN ANTONIO

Most Rev. Gustavo Garcia-Siller M.Sp.S.

Archbishop of San Antonio

2718 W Woodlawn

San Antonio, Texas 78228

210.734.2620 Fax 210.734.0231

Most Rev. Michael J. Boulette

Auxiliary Bishop

Most Rev. Gary W. Janak, JCL

Auxiliary Bishop

DIOCESE OF AMARILLO

Most Rev. Patrick J. Zurek D.D.

P.O. Box 5644

Amarillo, Texas 79117

806.383.2243 Fax 806.383.8452

DIOCESE OF DALLAS

Most Rev. Edward J. Burns

P.O. BOX 190507

Dallas, Texas 75219

214.528.2240 Fax 214.526.1743

Most Rev. J. Gregory Kelly

Auxiliary Bishop

DIOCESE OF EL PASO

Most Rev. Mark Seitz, D.D.

499 St. Matthews Street

El Paso, Texas 79907

915.872.8400 Fax 915.595.5095

DIOCESE OF FORT WORTH

Most Rev. Michael F. Olson, STD

800 W. Loop 820 South

Fort Worth, Texas 76108

817.560.3300 Fax 817.244.8839

DIOCESE OF LAREDO

Most Rev. James A. Tamayo

1901 Corpus Christi Street

Laredo, Texas 78043

956.727.2140

DIOCESE OF LUBBOCK

Most Rev. Robert M. Coerver

4620 4th Street

Lubbock, Texas 79416

806.792.3943 Fax 806.792.2953

Most Rev. Plácido Rodríguez, CMF

Bishop Emeritus

DIOCESE OF SAN ANGELO

Most Rev. Michael Sis, D.D.

P.O. Box 1829

San Angelo, Texas 76902

325.651.7500 Fax 325.651.6688

Most Rev. Michael D. Pfeifer, OMI

Bishop Emeritus

**ARCHDIOCESE OF GALVESTON-
HOUSTON**

Most Rev. Daniel Cardinal DiNardo
Archbishop of Galveston-Houston
P.O. Box 907
Houston, Texas 77001
713.659.5461 · Fax 713.759.9151

Most Rev. Italo Dell'Oro, C.R.S.
Auxiliary Bishop

DIOCESE OF AUSTIN

Most Rev. Joe S. Vásquez
6225 East Highway 290
Austin, Texas 78723
512.476.4888 · Fax 512.469.9537

DIOCESE OF BEAUMONT

Most Rev. David L. Toups
710 Archie Street
Beaumont, Texas 77701
409.838.0451 Fax 409.838.4511

Most Rev. Curtis John Guillory, S.V.D., D.D.
Bishop Emeritus

DIOCESE OF BROWNSVILLE

Most Rev. Daniel E. Flores
1910 University Boulevard
Brownsville, Texas 78520
956.542.2501 Fax 956.542.6751

Most Rev. Mario Alberto Avilés, C.O.
Auxiliary Bishop

DIOCESE OF CORPUS CHRISTI

Most Rev. Wm. Michael Mulvey, STL, DD
P.O. Box 2620
Corpus Christi, Texas 78403
512.882.6191 · Fax 512.882.1018

Most Rev. Edmond Carmody
Bishop Emeritus

DIOCESE OF TYLER

Bishop Joe S. Vásquez
Apostolic Administrator
1015 ESE Loop 323
Tyler, Texas 75701
903.534.1077 Fax 903.534.1370

DIOCESE OF VICTORIA

Most Rev. Brendan Cahill
P.O. Box 4070
Victoria, Texas 77903
361.573.0828 · Fax 361.573.5725

Most Rev. David E. Fellhauer, Ph.D., J.C.D.
Bishop Emeritus

**Personal Ordinate of the Chair of Saint
Peter**

Most Rev. Steven J. Lopes
PO Box 55206
Houston, TX 77255
713.609.9292 · Fax 713.429.4443

Historical Outline
THE DIOCESE OF LUBBOCK
Established and Created a Diocese
June 17, 1983

The High Plains and Rolling Plains areas of West Texas - -the Panhandle, The Llano Estacado ("Palisade Plains") or South Plains, and the Concho River Valley - - first became home to a Roman Catholic Diocese when the Diocese of Amarillo was established in 1926. The Diocese of Amarillo embraced an area from Dalhart in the north to Ozona in the south. The part north of the Colorado River had been taken from the Dallas diocese and the section south of the river came from San Antonio (with two counties, Andrews and Ector, coming from El Paso).

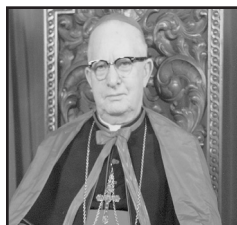


Gerken

The first bishop was Most Rev. Rudolph A. Gerken, then pastor of Ranger, Texas. In 1933, Bishop Gerken was appointed Archbishop of Santa Fe, and Robert E. Lucey came from California as Bishop of Amarillo. In 1941, Bishop Lucey was named Archbishop of San Antonio, and Most Rev. Laurence J. FitzSimon, then pastor of Seguin, Texas, became the third Bishop of Amarillo. Bishop FitzSimon died in 1958 and was succeeded by his auxiliary, Bishop John L. Morkovsky.

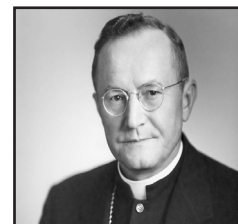


FitzSimon



Lucey

In 1962, the San Angelo Diocese was established and Rev. Thomas J. Drury, then pastor of Christ the King Parish in Lubbock, was named its first bishop. In 1965, Bishop Drury was transferred to Corpus Christi, and Most Rev. Thomas Tschoepe became Bishop of San Angelo.



Morkovsky

In 1969, Bishop Tschoepe was transferred to Dallas and was succeeded by Bishop Stephen Leven, then an auxiliary bishop of San Antonio, Bishop Leven retired in 1979 and was succeeded by Most Rev. Joseph A. Fiorenza.

Meanwhile, back in Amarillo, Bishop Morkovsky had been transferred in 1963 to Galveston-Houston and Most Rev. Lawrence M. DeFalco came from Dallas to serve as the Bishop of Amarillo.

Bishop DeFalco died in 1979 and Most Rev. Leroy T. Matthiesen of Amarillo was named Bishop of Amarillo in 1980.

On June 17, 1983, the Diocese of Lubbock was created with Most Rev. Michael J. Sheehan as its first bishop. The Diocese of Lubbock embraces an area that was formerly in the Diocese of Amarillo, plus five counties (Jones, Scurry, Haskell, Fisher, and Stonewall) from the Diocese of San Angelo.

Ten years later, Bishop Sheehan was named Archbishop of Santa Fe and, on April 5, 1994, His Holiness Pope John Paul II announced the appointment of Bishop Placido Rodriguez, CMF, as the second Bishop of the Diocese of Lubbock. His episcopal installation took place on June 1, 1994, in Lubbock.

Bishop Coerver was named his successor September 27, 2016 and was ordained and installed as Bishop of Lubbock on November 21, 2016, at Christ the King Cathedral in Lubbock.

Dates of Establishment:

- 1907 Saint John, Hermleigh
- 1911 Saint Alice, Plainview
(called Holy Trinity Church until 1928)
- 1912 Saint Joseph, Slaton
- 1921 Sacred Heart, Littlefield
- 1924 Sacred Heart, El Ranchito
Saint Joseph, Lubbock
- 1926 Holy Trinity, Hamlin
Diocese of Amarillo Established
Saint Margaret Mary, Lamesa
Our Lady of Mercy Hospital, Slaton
- 1928 Saint Mary Magdalen, Floydada
- 1929 Saint Joseph, Rotan
- 1931 Saint Philip, Pep
- 1935 Saint Elizabeth, Lubbock
- 1939 Saint Mary of the Plains Hospital, Lubbock
- 1944 Saint Theresa, Hale Center
(called Saint Charles, until 1961)
- 1946 Our Lady of Guadalupe, Plainview
- 1948 Saint Mary, Spur (originally in Jayton, Moved to Spur)
- 1950 Saint Michael, Levelland
- 1951 Saint Jude, Tahoka
(called Our Lady of Guadalupe until 1967)
- 1952 Our Lady of Guadalupe, Slaton
Saint Elizabeth, Snyder
Saint Anthony, Brownfield
- 1954 Saint Ann, Morton
- 1955 Our Lady of Guadalupe, Snyder
Saint William, Denver City
Saint Ann, Stamford
Saint Elizabeth, Paducah
Holy Cross, Post
- 1956 Immaculate Conception, Muleshoe
- 1957 Saint George, Haskell
- 1958 Saint Peter, Olton
Saint James, Seminole
Christ the King (Cathedral), Lubbock
- 1959 Saint Pius X, O'Donnell
Sacred Heart, Petersburg
Saint Michael, Ralls
- 1960 Saint Patrick, Lubbock
Our Lady of Grace, Lubbock
- 1961 Saint Theresa, Lubbock (Carlisle)
San Lorenzo, Lorenzo
Sacred Heart, Plainview
Blessed Sacrament, Wilson
Saint Theresa, Hale Center
Sacred Heart, Plains
Saint Paul, Seagraves
- 1962 Diocese of San Angelo established

- 1962 Saint Joseph, Crosbyton
Our Lady of Guadalupe, Matador
- 1963 Saint Joseph, Lockney
- 1965 Saint Philip Benizi, Shallowater
- 1966 Saint Isidore, Abernathy
Saint Mary Magdalen, Earth
Saint Anthony, Anton
- 1972 Epiphany, Jayton (first church was Saint Mary's built in 1929; closed August 6, 2017)
Saint Mary, Aspermont (first church was Sacred Heart, built in 1929; closed and sold in 1951)
Saint Philip Benizi, Idalou
- 1973 Saint Michael, Anson
Christian Renewal Center, Lubbock (now Catholic Renewal Center)
- 1974 San Ramon, Woodrow
Saint Mary, Sudan (closed September 1, 1996)
- 1976 Our Lady Queen of Apostles, New Deal
- 1978 Saint Francis of Assisi, Wolfforth
- 1980 Our Lady of Guadalupe, Lubbock
Saint John Neumann, Lubbock (Saint Peter's School built at this location by Saint Elizabeth's Parish in 1959)
- 1980 Mercy Retreat Center, Slaton (former convent of Sisters of Mercy who owned Mercy Hospital; officially deeded to the Diocese of Lubbock by the sisters in 1986)
- 1981 Holy Family, Cotton Center (closed August 17, 1996)
San Francisco de Asis, Ropesville
- 1983 Diocese of Lubbock established
- 1985 Catholic Center (built with funds from Kenney-East Foundation; now called the "Catholic Pastoral Center")
- 1988 San Isidro, Sundown (Closed June 30, 2018)
- 1990 Our Lady of Guadalupe, Plainview, moves to the former City National Bank building.
- 1998 Holy Spirit church, Lubbock
- 2015 Saint John the Baptist, Lubbock
- 2024 Saint Clare, Lubbock

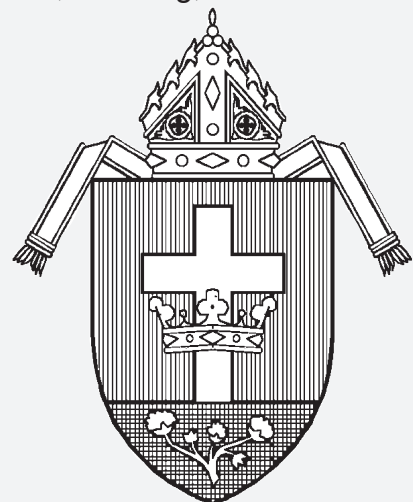
The Diocesan Coat of Arms

The arms of the Diocese of Lubbock are composed of a red shield on which is displayed a silver cross. On this cross is displayed a gold crown (diadem). The conjunction of those symbols form the representation traditionally used to signify Christ, the King; titular of the cathedral church for the diocese.

The symbolism of Christ the King is issuant from a base which represents the Caprock Escarpment that stands at the center of diocesan lands and upon which the city is built. This base is black to represent the petroleum often found under the ground. On the black background is superimposed a silver sprig of cotton, the economic mainstay of the region.

The shield – which is the central and most important feature of any heraldic device – is surmounted by a bishop's miter, in gold; the heraldic insignia of a diocese in the Roman Catholic Church.

By Paul J. Sullivan, heraldist



Catholic Diocese of Lubbock 2022 Statistical Abstract

Pastoral Care		<i>Covenant Medical</i>	
Bishop	1	Bed capacity	800
Bishop Emeritus	1	Total patients	125,773
<i>Diocesan priests</i>	27	Care centers	35
<i>Religious order priests</i>	14	Total patients	451,178
<i>Diocesan priests outside diocese</i>	2	Total served	30,000
<i>Diocesan priests retired</i>	15		
<i>Extern priests in diocese</i>	1	Sacramental Life	
Total priests in diocese	59		
Seminarians	6	Infant Baptisms	842
Deacons	75	Adult Baptisms	66
<i>Retired Deacons</i>	7	Received into full Communion	152
<i>Inactive Deacons</i>	3	First Communions	1,032
Women religious	23	Confirmations	740
Facilities:		Marriages:	
Parishes	61	Catholic	216
Chapels	2	Mixed Religion	29
<i>Mass attendance</i>	17,252	Total	245
Parochial schools	1	Deaths	401
Paid lay teachers	46	The Diocese of Lubbock:	
<i>Total students</i>	434	Texas Counties	25
Public school students in religious instruction:		Total square miles	23,382
High School	1,863	Catholic population	
Elementary School	5,957	(Self-identified)	136,894
<i>Total</i>	7,820	Total Population	
Total catechists	1,219	(U.S. Census)	494,458
Catholic Charities:	1	Catholic percentage of population	27.7
Catholic medical centers:			
<i>Covenant Women's & Children's</i>			
Bed capacity	420		
Total patients	97,339		